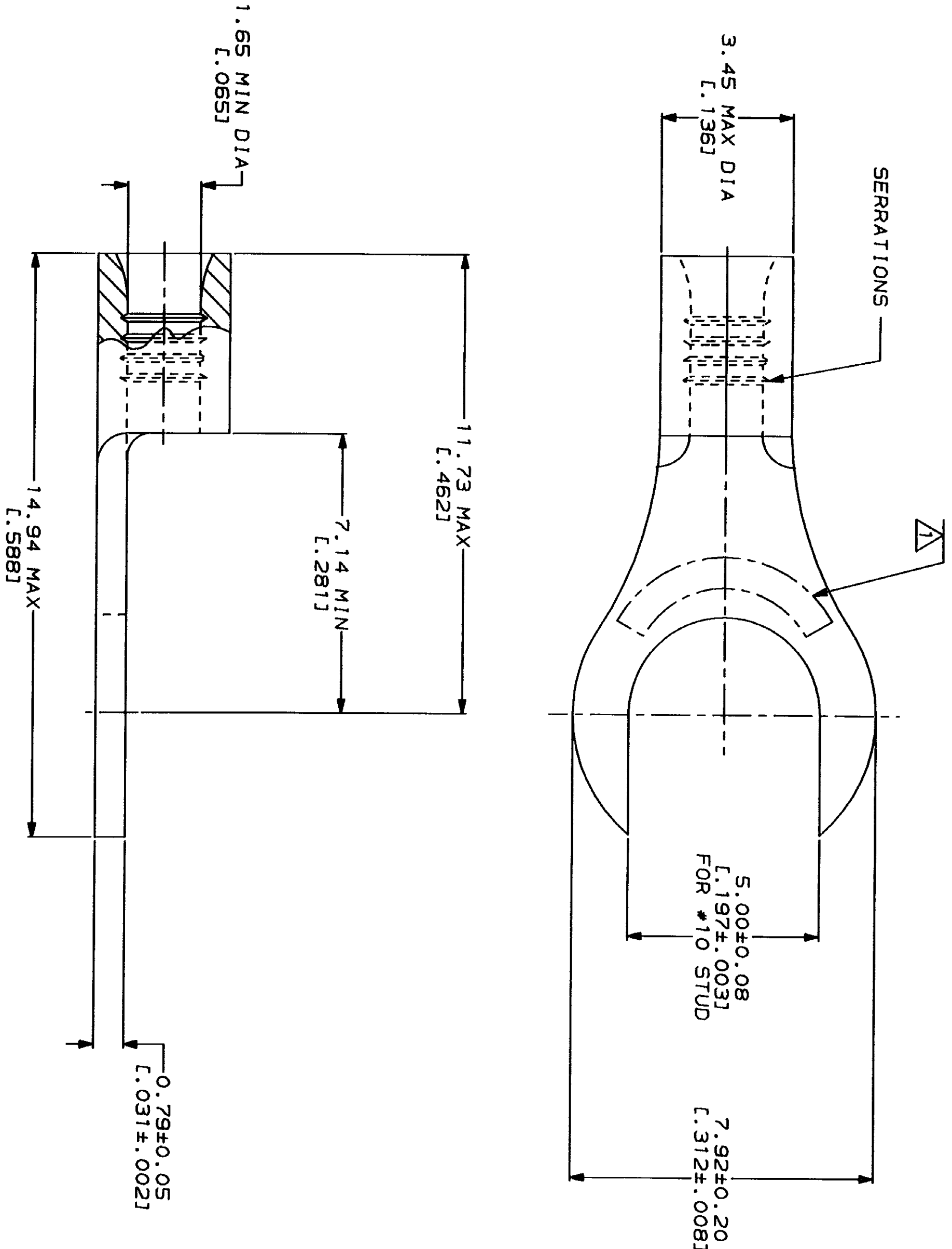


LOC		DIST		REV		DATE		APP	
G	14	P	#	ZONE	LTR	DESCRIPTION		DATE	
				A		REVISED PER 0720-0230-93		2/28/94	

METRIC
DIMENSIONS LISTED IN mm [INCHES]

AMP WIRE RANGE		IL E13288 Listed
22-16 AWG STRANDED		22-16 AWG STRANDED
IL LR7189 Certified		MILITARY P/N AND CLASS
NOT CERTIFIED		NOT APPLICABLE

△ STAMP AMP 22-18* APPROX AS SHOWN
22-16 TERMINALS ARE STAMPED 22-18 IN
ACCORDANCE WITH MILITARY SPECIFICATION
MIL-T-7928, COMMERCIAL WIRE RANGE IS 22-16



AMP INCORPORATED CUSTOMER SERVICE SYSTEMS		MAX RECOMMENDED OPERATING TEMPERATURE: 170°C MAX
FOR ADDITIONAL PRODUCT INFORMATION OR COPIES OF DRAWINGS AND TECHNICAL DOCUMENTS	PRODUCT INFORMATION CENTER 1-800-522-6752	VOLTAGE RATING: NOT APPLICABLE
FOR APPLICATION TOOLING INFORMATION	TOOLING ASSISTANCE CENTER 1-800-722-1111	WIRE CROSS SECTIONAL AREA RANGE: 0.26-1.65mm² [509-3,260] CIR MILS STRANDED
FOR ORDER ENTRY	1-800-526-5142	THIS DRAWING IS A CONTROLLED DOCUMENT FOR AMP INCORPORATED. IT IS SUBJECT TO CHANGE AND IS CONTINGENT UPON THE LATEST REVISION.

DO NOT SCALE PRINT. UNLESS SPECIFIED DIMENSIONS IN mm [INCHES] TOLERANCES ON: 2 PLG DEC ± . 3 PLG DEC ± .		DR 2-23-93 TA BRINKMAN	NAME AMP AMP Incorporated Harrisburg, PA 17105-3608
MATERIAL COPPER PER ASTM B-152 ANNEALED		CHK 2-23-93 DA PATTERSON	
FINISH TIN PLATE 0.00254 [1.00100] MIN THK PER MIL-T-10727		APPD 2-23-93 DE MILLER	
APPLICATION SPEC		APPD 2-23-93 JL MECKLEY	
SIZE CAGE CODE 00779		SCALE 10:1	TERMINAL, SLOTTED RING TONGUE, BUDGET
DRAWING NO G-323832		SHEET 1 OF 1	